

Bitek Australia

09CIS02-3KV

Product Type	Product Number	Description
Power Isolator	09CIS02-3KV	Galvanic Isolator 3KV 5 - 2000MHz

Fully isolated system outlet with capacitive and inductive coupling to ensure good screening effectiveness in 5 -1000MHz range.

This system outlet has standard 1 F Type female output connector.

The product fully complies to IEC safety requirements (IEC - 60728 - 1 § 9) and EMC requirements (IEC - 60728 - 2 § 4.4)

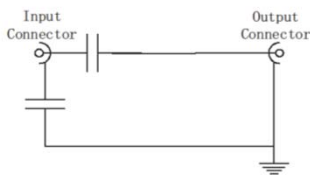
Model		CS200TV-2G System Outlet
Description	Freq. range	Specifications
Insertion Loss	5 - 40MHz	$0.9 \pm 0.8\text{dB}$
	40 - 470MHz	$0.9 \pm 0.8\text{dB}$
	470 - 862MHz	$1.3 \pm 1.0\text{dB}$
	862 - 2050MHz	$1.5 \pm 1.0\text{dB}$
Return Loss Input/Output	5 - 40MHz	$\geq 12\text{dB}$
	40 - 862MHz	$\geq 18\text{dB}^*$
	862 - 2050MHz	$\geq 6\text{dB}$
Galvanic Isolation** Inner conductor input - inner conductor output Outer conductor input - outer conductor output.		3K VDC for at least 1 minute not exceeding 0.7mA leakage current. 230 V RMS 50/60 Hz not exceeding 2.0mA RMS.
Screening Effectiveness***	30 - 470MHz	$\geq 75\text{dB}$
	470 - 1000MHz	$\geq 65\text{dB}$

* F > 40MHz - 1.5dB/octave

** IEC - 60728 - § 9 Safety requirement: 3K VDC \leq 0.7mA
230 VAC \leq 8.0mA

*** Transfer impedance method (5 - 30MHz)

Absorption Clamp Method according to IEC - 60728 - § 4.4 (30 - 1000MHz)



DIGITEKTM
Complete Digital Solutions

