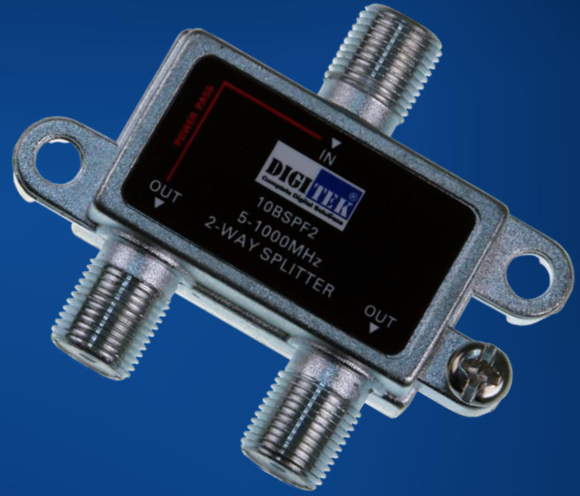


10BSPF2

Digitek F Type 2 Way Splitter

Power Pass 1 Leg

5MHz to 1000MHz



Features:

- Zinc die-cast housing, tin-plated
- Light weight and compact size
- Easy installation with two edge hole sites
- Mounting Screws Supplied
- Housing Earth Point
- Earth Screw Supplied
- Screening factor: 5-1000MHz ≥ 100 dB
- Micro-strip circuit design and perfect performance index
- All ports F Type female connector, 75 Ω

Specifications			
Frequency Range (MHz)	Insertion Loss (dB)	Mutual Isolation (dB)	Return Loss (dB)
5-40	3.5	25	20
40-470	3.8	28	20
470-860	4	25	18
860-1000	4.3	22	17