



StorageTek[®]
Complete Storage Solutions



PRODUCT GUIDE 2024

www.storagetek.com.au

Introduction

StorageTek® is an Australian owned company and a member of a larger multinational organization spanning three continents. Producing solutions to cater specifically for our consumers, StorageTek's product range includes tradesman and professional storage cases available in various sizes, with customizable racks, storage bins, trolleys and cabinets.

Unlike our competitors, our R&D team at StorageTek endeavour to engineer quality products that are reliable, professional and long-lasting, utilising premium materials and processes in our manufacturing.

Our cases are suitable for vehicles, garages, business premises, workshops and sheds. Louvered panels are also available as part of the complete solution. Larger solutions include truck boxes and job site boxes for working professionals, also available in various sizes and configurations.

All metal work, plastic injection molding, assembly, packaging and quality control is completely on-site in our 100,000 SQFT facility. Labelling and injection molding of private label brands is just part of the service that we offer for a complete turnkey solution to all your storage needs.

So whether you're in need of a quality storage case for around the home, or a large, heavy-duty tool box for a job site, or a commercial fit out of storage cabinets in a work vehicle, make it a StorageTek solution.

www.storagetek.com.au



Contents

ABS Cases	4
Frames	6
Cabinets - Cases	8
Trolley	9
Drawers	10
Cabinets - Drawers	11
Bins	12
Louvered Panels	13
Tool & Site Boxes	14
Index	15

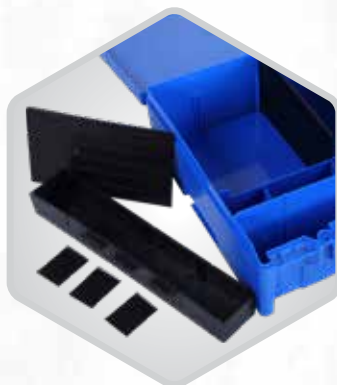
StorageTek ABS Cases

Produced in a tough ABS (Acrylonitrile Butadiene Styrene) thermoplastic, these sturdy cases have been crafted with superior materials, with particular attention paid to the finer details. Creating a professional storage solution that stands a cut above the rest.

Available in 2 sizes (small & large), with either a solid colour ABS or a clear PC lid option. (Different colour lids or clasps are also available).



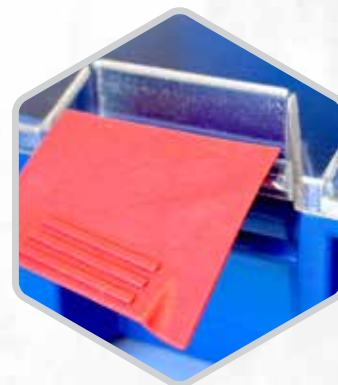
STS - Small StorageTek case with 9 removable dividers for adjustable compartments.



STL - Large StorageTek case with 3 large internal dividers and a 4 compartment lift-out tray.



Foldable, ergonomically designed carry handle, padlockable lid, both with incorporated label holder for identification of contents.



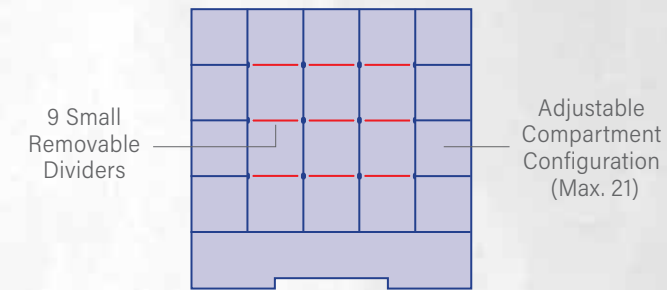
Heavy-duty, securable clasps made from Polypropylene / Fiberglass resin, ensuring firm locking.

More than just your average storage case, StorageTek cases not only stackable on their own, but are compatible with cabinets and frames from StorageTek, Rolacase and other leading brands in the market.



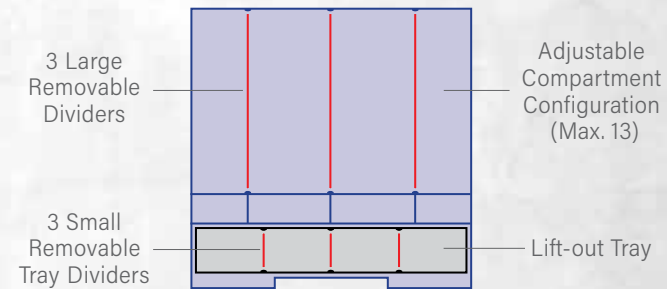
Accessories	<ul style="list-style-type: none"> ● CLASPS-BK ● CLASPS-RD Left & Right Case Clasp Set
	PCLID PC Clear Lid with Stainless Steel Pin

STS - Small Cases



Solid Colour Lid	● STS-BK ● STS-BL ● STS-GY ● STS-RD	Clear PC Lid	● STSC-BK ● STSC-BL ● STSC-GY ● STSC-RD	Features	<ul style="list-style-type: none"> • Adjustable compartment configuration (10-21) • Includes 9 small removable dividers
	Dimensions		370(W) x 370(D) x 85(H) mm		
Weight				2.05kg	

STL - Large Cases



Solid Colour Lid	● STL-BK ● STL-BL ● STL-GY ● STL-RD	Clear PC Lid	● STLC-BK ● STLC-BL ● STLC-GY ● STLC-RD	Features	<ul style="list-style-type: none"> • Adjustable compartment configuration (6-13) • Includes 3 large removable dividers • Includes Lift-out Tray with 3 small removable dividers
	Dimensions		370(W) x 370(D) x 130(H) mm		
Weight				2.4kg	



StorageTek Frames

Available in a range of configurations, these quality, double welded frames come fully constructed, eliminating any rattles or time wasted on assembly. Frames can be joined side-by-side or vertically stacked, and all feature a UV matt black powder coating finish.

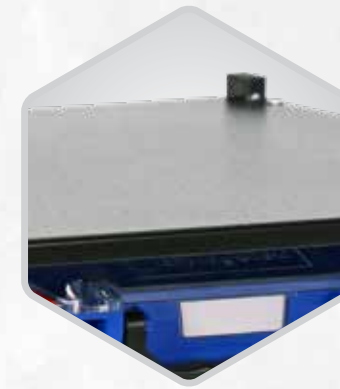
Get a frame on its own for your existing StorageTek, Rolacase or other leading brand cases. Or buy the frame with cases included. All cabinet frames come double boxed with foam corners, to protect against possible shipping damages.

	Model	Features	Dimensions	Weight
Single Configuration	SFS2S	Assembled empty (provision for 2 small cases)	420(W) x 461(D) x 255(H) mm	6.8kg
	SFS2SA-BL	Assembled with 2 small blue cases with clear PC lids	420(W) x 461(D) x 255(H) mm	11kg
	SFS3S	Assembled empty (provision for 3 small cases)	420(W) x 461(D) x 350(H) mm	8.2kg
	SFS3SA-BL	Assembled with 3 small blue cases with clear PC lids	420(W) x 461(D) x 350(H) mm	14.6kg
	SFS4S	Assembled empty (provision for 4 small cases)	420(W) x 461(D) x 460(H) mm	9.7kg
	SFS4SA-BL	Assembled with 4 small blue cases with clear PC lids	420(W) x 461(D) x 460(H) mm	18.3kg
	SFS5S	Assembled empty (provision for 5 small cases)	420(W) x 461(D) x 571(H) mm	11.5kg
	SFS5SA-BL	Assembled with 5 small blue cases with clear PC lids	420(W) x 461(D) x 571(H) mm	22.2kg
	SFS2L	Assembled empty (provision for 2 large cases)	420(W) x 461(D) x 350(H) mm	7kg
	SFS2LA-BL	Assembled with 2 large blue cases with clear PC lids	420(W) x 461(D) x 350(H) mm	12.1kg
Dual Configuration	SFS2L1S	Assembled empty (provision for 2 large & 1 small case)	420(W) x 461(D) x 460(H) mm	8.5kg
	SFS2L1SA-BL	Assembled with 2 large & 1 small blue cases with clear PC lids	420(W) x 461(D) x 460(H) mm	15.8kg
	SFS2L2S	Assembled empty (provision for 2 large & 2 small cases)	420(W) x 461(D) x 571(H) mm	10.3kg
	SFS2L2SA-BL	Assembled with 2 large & 2 small blue cases with clear PC lids	420(W) x 461(D) x 571(H) mm	19.7kg
	SFD2L3S	Assembled empty (provision for 2 large & 3 small cases)	827(W) x 461(D) x 350(H) mm	14.3kg
	SFD2L3SA-BL	Assembled with 2 large & 3 small blue cases with clear PC lids	827(W) x 461(D) x 350(H) mm	25.8kg
	SFD6S	Assembled empty (provision for 6 small cases)	827(W) x 461(D) x 350(H) mm	15.6kg
	SFD6SA-BL	Assembled with 6 small blue cases with clear PC lids	827(W) x 461(D) x 350(H) mm	28.5kg
	SFD4L	Assembled empty (provision for 4 large cases)	827(W) x 461(D) x 350(H) mm	13.1kg
	SFD4LA-BL	Assembled with 4 large blue cases with clear PC lids	827(W) x 461(D) x 350(H) mm	23.2kg
	SFD2L7S	Assembled empty (provision for 2 large & 7 small cases)	827(W) x 461(D) x 571(H) mm	20.7kg
	SFD2L7SA-BL	Assembled with 2 large & 7 small blue cases with clear PC lids	827(W) x 461(D) x 571(H) mm	40.7kg

Contact your local StorageTek Rep to discuss substituting the standard accompanying blue cases, for either black, grey or red cases, when purchasing an assembled frame kit. PLEASE NOTE: Minimum Order Quantities apply if requesting alternate colour options.



4 Joiner Frame Splice Kit, for vertical stacking (sold separately).



Heavy-duty, powder coated hammertone work plate included as standard.



Fully welded for extra strength, with pre-drilled screw holes.



Dual rear rubber bumpers on all sliding rails.





StorageTek Cabinets With Cases

Secure your cases and upgrade from a frame to a cabinet. Quality welded, with a matt grey powder coating finish, all cabinets are stackable, and include a standard adaptor kit for floor mounting.

Cabinets also have the added feature of locking in it's contents by installing an optional lockable door (sold separately).



Rubber mat for top face, which can be used as an added work surface, and removed for cleaning.



Inner latch for secure drawer locking (also featured on all StorageTek Frames).



Universal Adaptor Kit of 4 L-Shaped mounting feet with screws & locking nuts, for wall/floor mounting (sold separately).



Cabinet Vertical Stacking Kit of 4 straight brackets with screws & locking nuts (sold separately).

	Model	Features	Dimensions	Weight
Small Cases	SCS2S	Assembled empty (provision for 2 small cases)	420(W) x 461(D) x 227(H) mm	9kg
	SCS2SA-BL	Assembled with 2 small blue cases	420(W) x 461(D) x 227(H) mm	13.2kg
	SCS3S	Assembled empty (provision for 3 small cases)	420(W) x 461(D) x 322(H) mm	11.4kg
	SCS3SA-BL	Assembled with 3 small blue cases	420(W) x 461(D) x 322(H) mm	17.8kg
	SCS4S	Assembled empty (provision for 4 small cases)	420(W) x 461(D) x 417(H) mm	13.7kg
	SCS4SA-BL	Assembled with 4 small blue cases	420(W) x 461(D) x 417(H) mm	22.3kg
	SCS5S	Assembled empty (provision for 5 small cases)	420(W) x 461(D) x 544(H) mm	16.5kg
	SCS5SA-BL	Assembled with 5 small blue cases	420(W) x 461(D) x 544(H) mm	27.2kg
	SCS7S	Assembled empty (provision for 7 small cases)	420(W) x 461(D) x 740(H) mm	21.1kg
SCS7SA-BL	Assembled with 7 small blue cases	420(W) x 461(D) x 740(H) mm	36.2kg	
Large Cases / Combo	SCS2L	Assembled empty (provision for 2 large cases)	420(W) x 461(D) x 322(H) mm	10.2kg
	SCS2LA-BL	Assembled with 2 large blue cases	420(W) x 461(D) x 322(H) mm	15.2kg
	SCS2L1S	Assembled empty (provision for 2 large & 1 small case)	420(W) x 461(D) x 420(H) mm	12.5kg
	SCS2L1SA-BL	Assembled with 2 large & 1 small blue cases	420(W) x 461(D) x 420(H) mm	19.7kg
	SCS2L2S	Assembled empty (provision for 2 large & 2 small cases)	420(W) x 461(D) x 547(H) mm	15.3kg
SCS2L2SA-BL	Assembled with 2 large & 2 small blue cases	420(W) x 461(D) x 547(H) mm	25.8kg	



StorageTek Trolley

For a more portable storage solution, there's the StorageTek 7 Small Case Trolley with cases.

Features	<ul style="list-style-type: none"> • Body assembled with 7 blue ABS small cases with a clear PC lids • Includes Wheel Kit (SWHEELS)*: 4x commercial-grade wheels with 2 locking • Front or rear mountable handle • Supports lockable cabinet door (SC7D)
Dimensions	420(W) x 461(D) x 993(H) mm
Weight	42.3kg

*Pop Rivet Gun is required to assemble wheels to trolley base.

Cabinet Lockable Doors

Add another security level to your cabinets with a 3-Point Locking Door. **PLEASE NOTE:** Doors are sold separately. (No door option for SCS2S Cabinet).

Model	Description
SCS3D	Suits StorageTek Cabinets: SCS3S, SCS2L
SCS4D	Suits StorageTek Cabinets: SCS2L1S, SCS4S
SCS5D	Suits StorageTek Cabinet: SCS5S, SCS2L2S
SCS7D	Suits StorageTek Cabinet: SCS7S





SC3SDR

StorageTek Cabinets With Drawers

For an even more protected solution, these cabinets have the same features but with the added security of individually key-lockable drawers.

Available in different small and large drawer configurations, these cabinets with a universal lockable drawer, can also secure a STS case (sold separately).

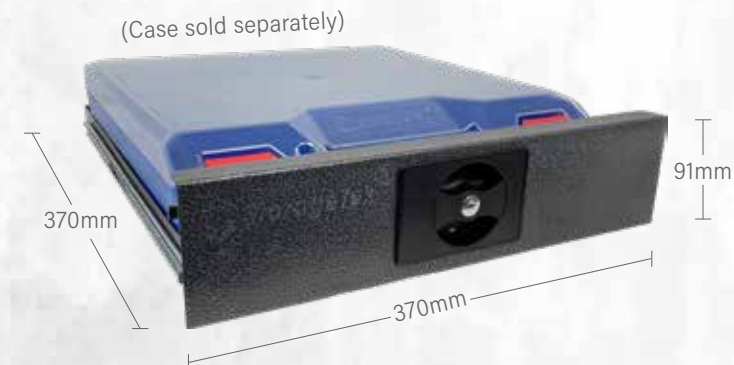
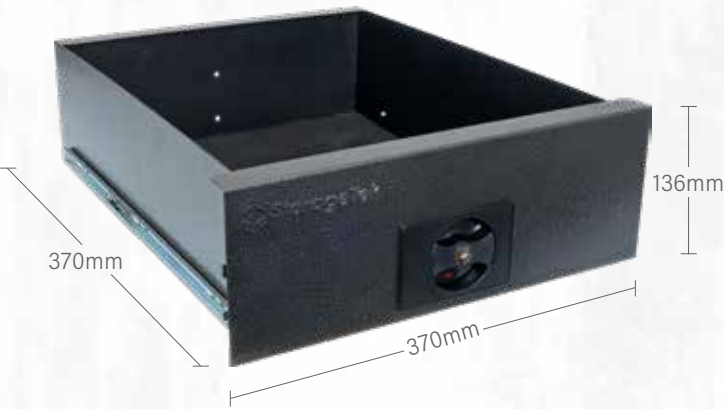
	Model	Features	Dimensions	Weight
Small Drawers	SC3SDR	Assembled with 3 small drawers	420(W) x 461(D) x 322(H) mm	20kg
	SC4SDR	Assembled with 4 small drawers	420(W) x 461(D) x 417(H) mm	24.8kg
	SC5SDR	Assembled with 5 small drawers	420(W) x 461(D) x 544(H) mm	30.8kg
	SC7SDR	Assembled with 7 small drawers	420(W) x 461(D) x 740(H) mm	41kg
Combo	SC2L1SDR	Assembled with 2 large & 1 small drawer	420(W) x 461(D) x 417(H) mm	22.5kg
	SC2L2SDR	Assembled with 2 large & 2 small drawers	420(W) x 461(D) x 544(H) mm	27.8kg

SCDRS - Small Drawer

Replacement drawers are also available.



SCDRL - Large Drawer



STUDS - Universal Lockable Small Drawer

This universal drawer allows a StorageTek STS case or Rolacase/Fischer/TekPak case to be securely locked into a cabinet.



Rubber mat for top face, which can be used as an added work surface, and removed for cleaning.



Secure drawer locking mechanism. Keys are included, with spare 2-set keys sold separately.



Universal Adaptor Kit of 4 L-Shaped mounting feet with screws & locking nuts, for wall/floor mounting (sold separately).



Cabinet Vertical Stacking Kit of 4 straight brackets with screws & locking nuts (sold separately).



SC3SDR



SC4SDR



SC5SDR



SC7SDR



SC2L1SDR



SC2L2SDR



Drawers compatible with standard cabinets

A drawer can be added to any standard cabinet by removing the standard slides and replacing them with a drawer kit, which comes complete with appropriate slides and locking tabs.

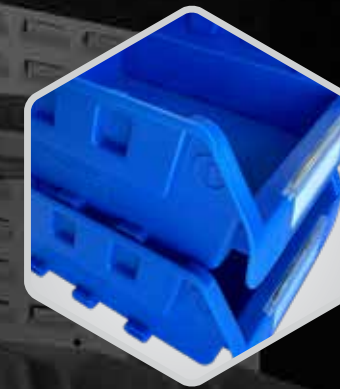


StorageTek Bins

Whether they're stacked on a shelf or organised on a louvered wall panel, these tough, polypropylene plastic bins feature a wide front-angled opening with replaceable label holders, making sorting, storing and picking items a breeze.



Inner side grooves for neat, nestable stacking of bins when they are not in use.



Unique interlocking tabs on the bottom of bins, for secure vertical stacking when in use.



Unlike some other brands, StorageTek bins include replaceable label holders.



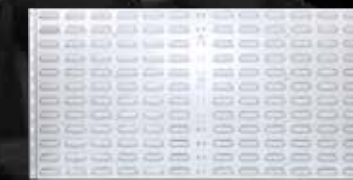
Bins #4, #5 & #6 can use dividers to create extra compartments. (Dividers sold separately)

StorageTek Louvered Panels

(Bins are not included and sold separately).



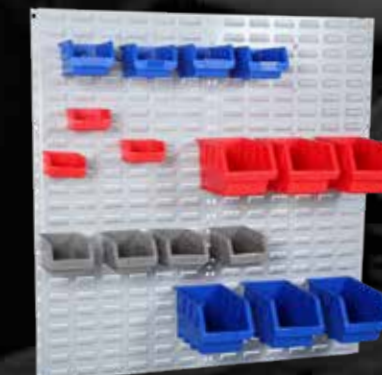
SLPSS



SLPWS



SLPSM



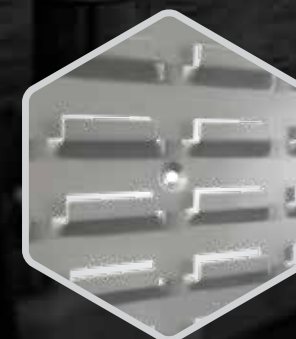
SLPWM



SLPSL



SLPWL



Louvered panels have a depth of 13.2mm, with countersunk holes every 3 rows for greater load bearing capacity.

	Models	Description	Dimensions	Bin Capacity	Weight
Bins	SB1-BL SB1-RD SB1-YL	Size #1 Bin	90(W) x 112(D) x 51(H) mm	2kg	0.03kg
	SB2-BL SB2-RD SB2-YL	Size #2 Bin	105(W) x 162(D) x 76(H) mm	5kg	0.07kg
	SB3-BL SB3-RD SB3-YL	Size #3 Bin	138(W) x 220(D) x 125(H) mm	9kg	0.2kg
	SB4-BL SB4-RD SB4-YL	Size #4 Bin	205(W) x 276(D) x 168(H) mm	14kg	0.38kg
	SB5-BL SB5-RD SB5-YL	Size #5 Bin	205(W) x 330(D) x 168(H) mm	16kg	0.44kg
	SB6-BL SB6-RD SB6-YL	Size #6 Bin	410(W) x 276(D) x 168(H) mm	19kg	0.6kg
Dividers	STB46D STB46BK	For Bins #4 / #6	261(W) x 150(D) x 5.8(H) mm	-	-
	STB5D STB5BK	For Bins #5	315(W) x 145(D) x 4.6(H) mm	-	-

	Model	Dimensions
Small	SLPSS	457(W) x 457(H) mm
	SLPSM	457(W) x 914(H) mm
	SLPSL	457(W) x 1829(H) mm
Wide	SLPWS	914(W) x 457(H) mm
	SLPWM	914(W) x 914(H) mm
	SLPWL	914(W) x 1829(H) mm

Toolbox

Great for the back of the ute or in the shed, this medium-sized toolbox is built tough, with a 1.4mm thick steel construction and reinforced lid, complete with a dust seal.



SMTB



SB2448



SB1942

Job Site Boxes

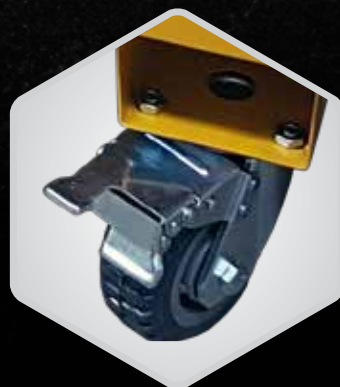
Safely and securely stow your valuable tools and equipment on-site with these sturdy Site Boxes and Tool Box.



Heavy-duty gas struts with danger warning sticker.



Secure, dual external locking points.



Sturdy feet, pre-drilled for optional castors.



Site Box Castor Set (sold separately).

SBCASTOR4PK

Model	Description	Dimensions	Weight / Capacity
SMTB	Medium Yellow Toolbox	775(W) x 430(D) x 310(H) mm	12.4kg / 45kg
SB1942	Small Yellow Site Box	812(W) x 483(D) x 445(H) mm	35kg / 400kg
SB2448	Large Yellow Site Box	1220(W) x 610(D)x 702(H) mm	64kg / 600kg

Index

CLASPS-BK	4	SB6-RD	12	SCS3SA-BL	8, 9	SFS2L	6, 7	SLPWS	13
CLASPS-RD	4	SB6-YL	12	SCS4D	8, 10	SFS2L1S	6, 7	SMTB	14
PCLID	4	SBCASTOR4PK	14	SCS4S	8, 9	SFS2L1SA-BL	6, 7	STB46D	12
SB1942	14	SC2L1SDR	10, 11	SCS4SA-BL	8, 9	SFS2L2S	6, 7	STB46DBK	12
SB1-BL	12	SC2L2SDR	10, 11	SCS5D	8, 10	SFS2L2SA-BL	6, 7	STB5D	12
SB1-RD	12	SC3SDR	10, 11	SCS5S	8, 9	SFS2LA-BL	6, 7	STB5DBK	12
SB1-YL	12	SC4SDR	10, 11	SCS5SA-BL	8, 9	SFS2S	6, 7	STL-BK	4, 5
SB2448	14	SC5SDR	10, 11	SCS7D	8, 10	SFS2SA-BL	6, 7	STL-BL	4, 5
SB2-BL	12	SC7SDR	10, 11	SCS7S	8, 9	SFS3S	6, 7	STLC-BK	4, 5
SB2-RD	12	SCDRL	10	SCS7SA-BL	8, 9	SFS3SA-BL	6, 7	STLC-BL	4, 5
SB2-YL	12	SCDRS	10	SCS7STA-BL	9	SFS4S	6, 7	STLC-GY	4, 5
SB3-BL	12	SCS2L	8, 9	SCUAK	9, 11	SFS4SA-BL	6, 7	STLC-RD	4, 5
SB3-RD	12	SCS2L1S	8, 9	SCVSK	9, 11	SFS5S	6, 7	STL-GY	4, 5
SB3-YL	12	SCS2L1SA-BL	8, 9	SFD2L3S	6, 7	SFS5SA-BL	6, 7	STL-RD	4, 5
SB4-BL	12	SCS2L2S	8, 9	SFD2L3SA-BL	6, 7	SFSK	7	STS-BK	4, 5
SB4-RD	12	SCS2L2SA-BL	8, 9	SFD2L7S	6, 7	SKEYS	11	STS-BL	4, 5
SB4-YL	12	SCS2LA-BL	8, 9	SFD2L7SA-BL	6, 7	SLPSL	13	STS-GY	4, 5
SB5-BL	12	SCS2S	8, 9	SFD4L	6, 7	SLPSM	13	STS-RD	4, 5
SB5-RD	12	SCS2SA-BL	8, 9	SFD4LA-BL	6, 7	SLPSS	13	STUDS	11
SB5-YL	12	SCS3D	8, 10	SFD6S	6, 7	SLPWL	13	SWHEELS	9
SB6-BL	12	SCS3S	8, 9	SFD6SA-BL	6, 7	SLPWM	13		





StorageTek P/L

Head Office: 11 Sheppard Street, Hume ACT 2620, Australia

Factory: 3rd Floor, Building B, NO. 108 Industrial Avenue North, Xiaolan Town,
ZhongShan, 528414, Guangdong, China

Head Office:

Factory:

☎ +612 62601875 or ☎ +86 76023630495

Email Enquiries: sales@storagetek.com.au

www.storagetek.com.au