



01GMIMO10

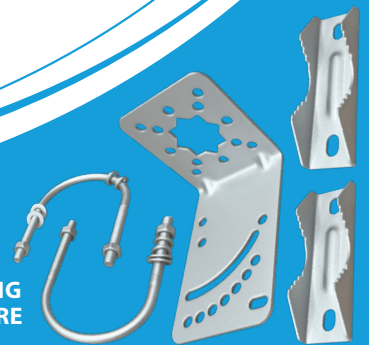
## 2X2 MIMO ANTENNA

### Specifications:

	Electrical
Frequency Range	698-960MHz / 1710MHz / 1800-2700MHz / 3500MHz / 3800MHz / 4000MHz
Gain	15dBi x 2
Polarisation	1x Vertical & 1x Horizontal

	Mechanical
Connectors	2x SMA Male
Cables	2x Attached RG58 5m
Materials	<b>Antenna Radome:</b> ABS Plastic
IP Rating	IP65
Wind Speed Rating	Up to 60m/s
Operating Temperature	-40°C to 60°C
Humidity Range	5% to 95%
Dimensions (mm)	500(H) x 160(W) x 80(D)
Weight (kg)	1.2

MOUNTING  
HARDWARE



### Features:

- Exceptional high gain performance, even over long distances
- Wideband MIMO 4G/5G antenna (698-4000Hz) with 15dBi gain x 2
- Backwards compatible with 2G/3G/4G LTE (5G ready)
- Two cross-polarised antennas in one enclosure for optimal LTE performance
- Waterproof and weather-resistance with an IP65 rating
- Includes two connected 5m RG58 cables with SMA Male connectors
- Rated for wind speeds up to 60m/s
- Direct current lightning protection
- ROHS compliant
- Includes mounting kit with angle brackets & U-Clamps (suits pole diameter of 32-65mm)

### What's in the box

- 1x Antenna with 2x attached SMA Cables
- 1x L-Bracket
- 2x V-Blocks
- 2x U-Clamps
- 4x Spring Washers
- 4x Washers
- 4x Nuts

Product information and pricing up to date as of March 18, 2026 3:11 PM. For more information, visit [www.hillsantenna.com.au](http://www.hillsantenna.com.au)

Brought to you by:



### Canberra

1/13 Paspaley Street  
Hume, ACT, 2620

02 6260 1874

actsales@bitek.com.au

### Sydney

17 Amax Avenue  
Girraween, NSW, 2145

02 9659 2272

orders@bitek.com.au

### Melbourne

22 Constance Court  
Epping, VIC, 3076

03 9456 9222

melbsales@bitek.com.au

### Adelaide

1 Temple Court  
Ottoway, SA, 5013

08 8395 4111

sasales@bitek.com.au